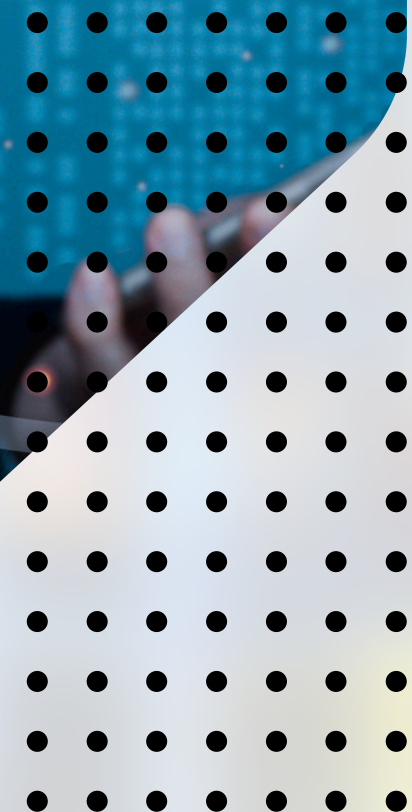
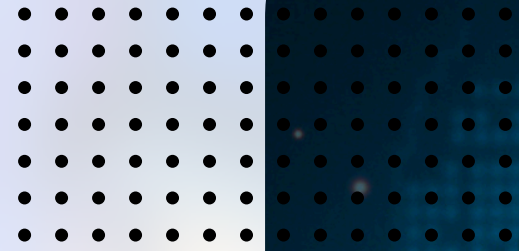


SMART TRAINING SOLUTIONS

FOR SMARTER TEAMS.



trainzy 

TABLE OF CONTENT

1 INTRODUCTION

2 BENEFITS

3 FEATURES

4 CONTACT

trainzy is an innovative corporate training management system designed to streamline and enhance the entire training process for organizations. This cloud-based solution offers tools to assess training needs, manage both online and in-house sessions, and track employee progress with ease.

With unlimited user access under a fair usage policy, TrainSmart ensures cost-effective scalability for businesses of all sizes. By providing insightful analytics and a user-friendly interface, TrainSmart empowers companies to upskill their workforce, boost productivity, and achieve organizational excellence.

KEY BENEFITS

TRAINING MANAGEMENT SYSTEM



Training Management

Organize, schedule, and track online, in-house, and external training programs seamlessly.



Integrated e-learning Platform

Provide employees with a centralized hub for accessing online courses, resources, & assessments.



Performance Evaluation

Track employee progress and training effectiveness through detailed performance reports & analytics.



Training Incentive Programs

Encourage continuous learning and professional growth through gamified incentives.

can be operated via mobile
EASY TO USE



FEATURES

Product Features

1

Employee Management

Efficiently manage employee profiles, roles, and training records in one centralized system.

trainzy



Product Features

2

Training Expiry Alerts

Receive automated notifications for upcoming training renewals or certifications to ensure compliance.

Training Scheduling

trainzy



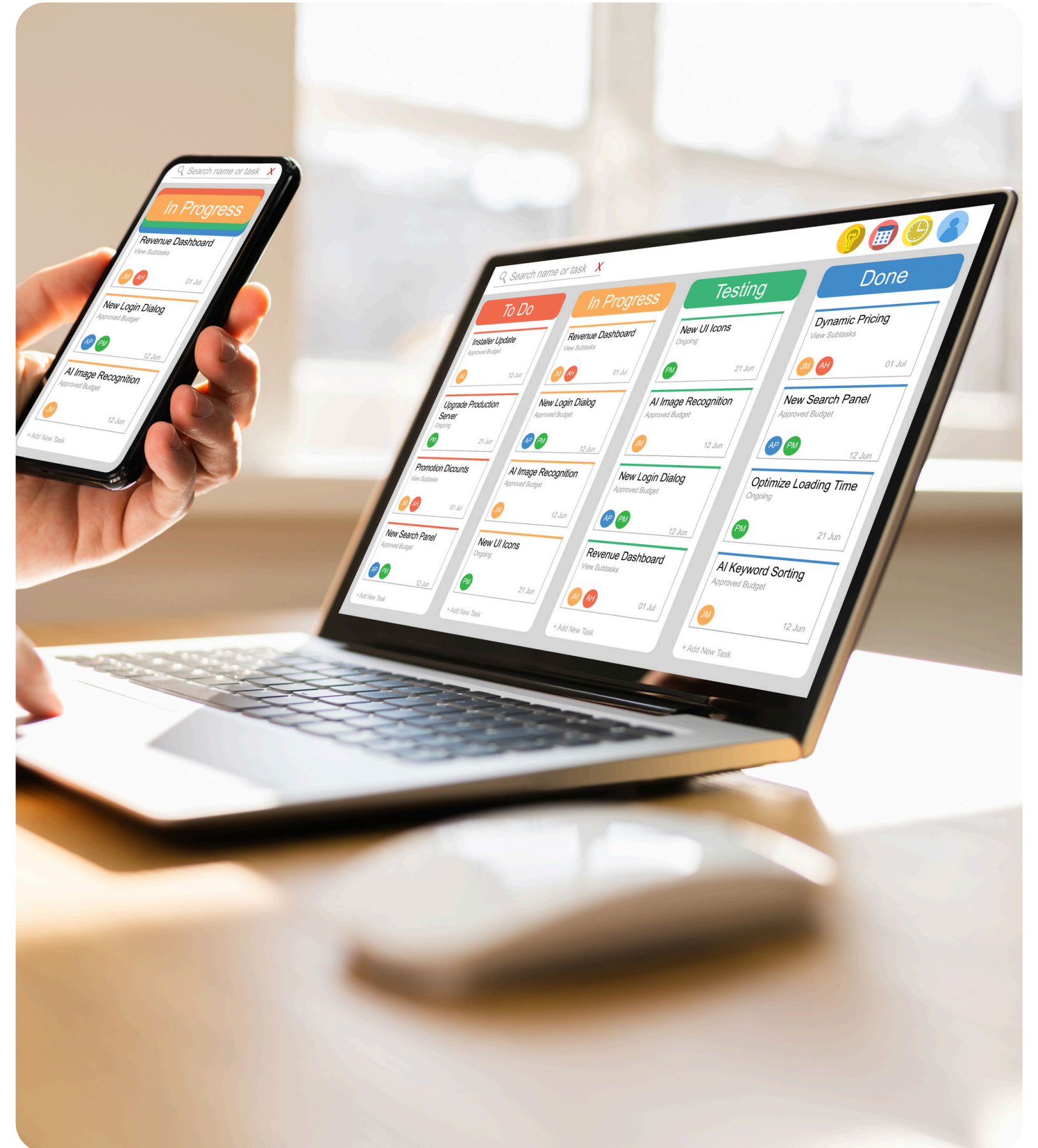
Product Features

3

Training Scheduling

Schedule in-house, online, and external training sessions with ease using a user-friendly interface.

trainzy 



Product Features

4

Attendance Tracking

Monitor and record attendance for all training sessions, ensuring participation and accountability.

trainzy



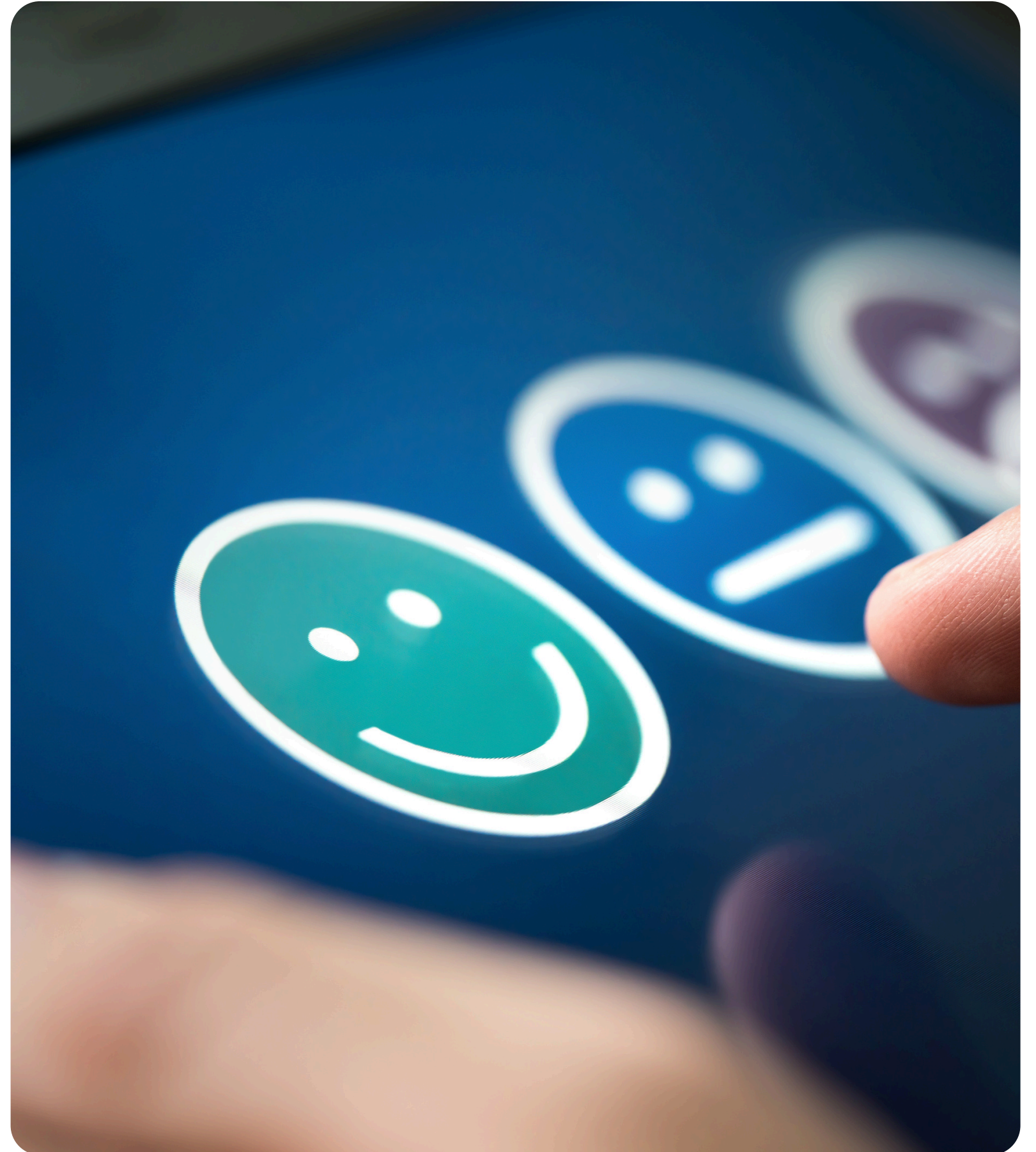
Product Features

5

Manager Feedback

Enable managers to provide constructive feedback on employee performance post-training.

trainzy



Product Features

6

Personalized Dashboards

For Employees | For Managers | For Directors

trainzy 



Product Features

7

Integrated Learning Platform

Provide a seamless and engaging learning experience with access to curated courses and resources.

trainzy 



Product Features

8

Certifications Issuance

Automatically issue certificates to employees upon successful completion of training programs.

trainzy



Product Features

9

Performance Evaluations

Assess employee performance post-training with integrated evaluation tools and reporting.

trainzy 



Product Features

10 Email Alerts

Stay informed with timely email notifications for training schedules, renewals, and important updates.

trainzy



Product Features

11

Recruitment Effortlessly

Simplify your hiring process—track applications, manage interviews, and onboard talent seamlessly, all in one platform.

trainzy 



Product Features

12

Customization Made Possible

The Pro version offers the flexibility to customize features to suit your specific needs.

trainzy 



Software Proposal & Terms of Service

TERMS & CONDITIONS

Customization:

- Major customizations are charged separately and require a written agreement before implementation, whereas minor customizations are included in the Pro package.

Service Level Agreement (SLA):

- System uptime guaranteed at 99.9%.
- Technical support provided during business hours (response time: 24 hours).

Data Security:

- All client data is encrypted and stored securely. The provider is not liable for data breaches resulting from user negligence.

Termination:

- Either party can terminate the agreement with a 30-day written notice.

Ownership:

- The system is provided on a rental basis; ownership rights remain with the provider.

PAYMENT TERMS

- Payment is due in full upon signing/Acceptance of this quote
- We accept payment via bank transfer
- Refunds are not available once the software has been installed and activated

Please note that the cost above does not include any customizations or integrations with other systems. If you require any additional features or modifications, we can provide a separate quote based on your specific needs.

If you have any questions or would like to proceed with the purchase, please let us know. We look forward to the opportunity to work with you.

Yearly Subscription Plan



BASIC

\$80

- 250 Users + 2 Admins
- Free Features Update
- Training
- Email Support

ADVANCED

\$95

- 350 Users + 4 Admins
- Free Features Update
- Training
- Email Support
- Call Support

PRO

\$99

- 600 Users + 10 Admins
- Free Features Update
- 5 Minor Customizations
- Training
- Dedicated Support

Monthly Subscription Plan



BASIC

\$95

- 250 Users + 2 Admins
- Free Features Update
- Training
- Email Support

ADVANCED

\$115

- 350 Users + 4 Admins
- Free Features Update
- Training
- Email Support
- Call Support

PRO

\$120

- 600 Users + 10 Admins
- Free Features Update
- 5 Minor Customizations
- Training
- Dedicated Support



CONTACT US:



+92 344 2564189



www.trainzy.net



Info@trainzy.net